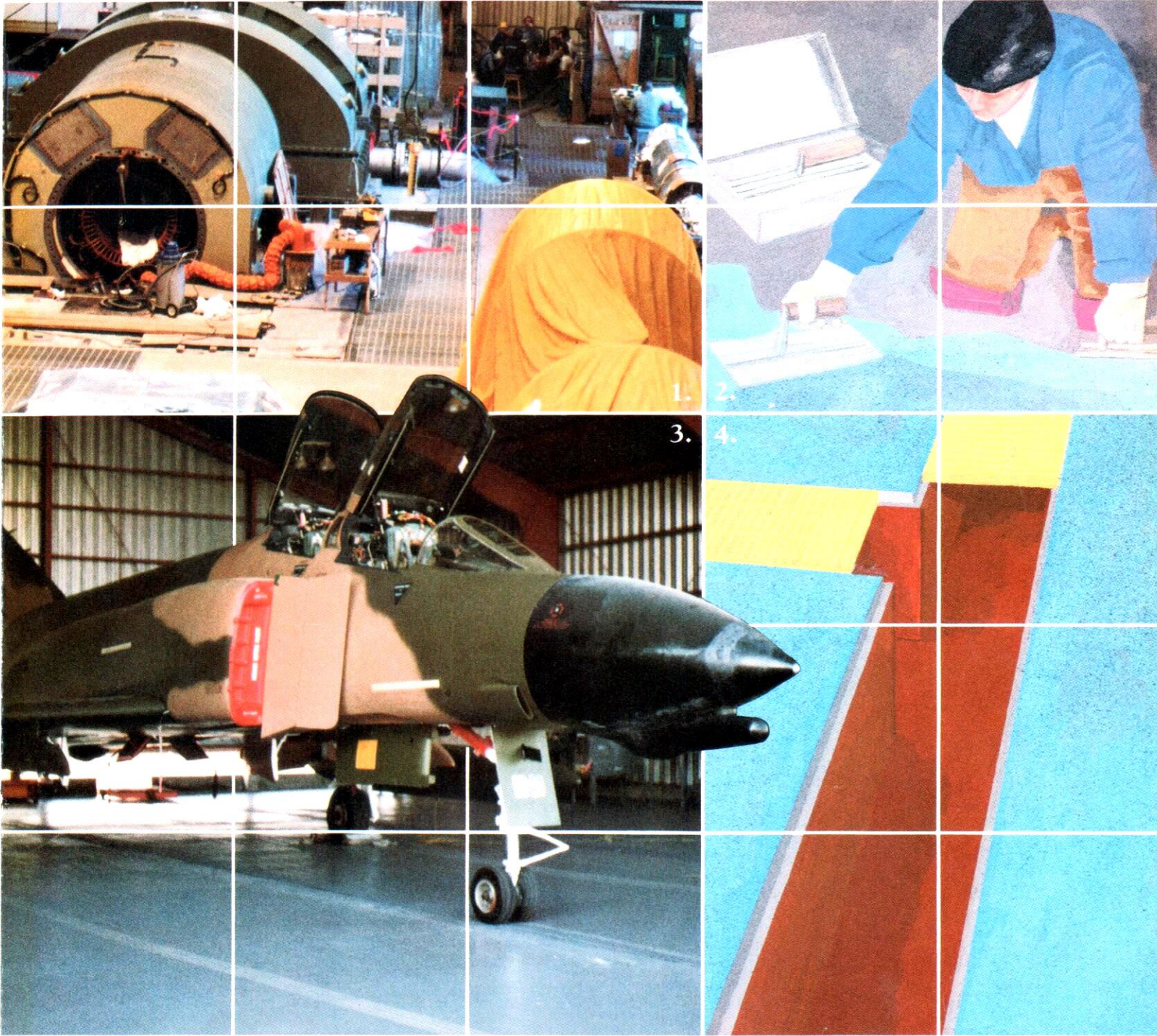


TERA-GEM III EPOXY SYSTEM

BY REVOLAN



1. Epoxy Injection Repair,
The Geysers, Geyserville, CA
2. Troweling Tera-Gem III
3. Hangar Floor, McClellan Air
Force Base, Sacramento, CA
4. Multiple-Use Floor and Corrosive
Trench Lining

TERA-GEM III EPOXY SYSTEM

Tera-Gem III is a proven epoxy system that provides a maximum-resistance surface for mild corrosive use as well as high corrosive storage use and containment needs. With the added advantage of adhesive strength, a high tolerance to impact, and an abrasion-resistant quality, Tera-Gem III is one of the most respected products available.

Tera-Gem III was developed to solve the many problems that are destructive to cement surfaces, ranging from abrasion to corrosive abuse. Solvents, acids, animal bi-products, processing chemicals, and alkalis are just a few of the common enemies of efficient maintenance for many business facilities.

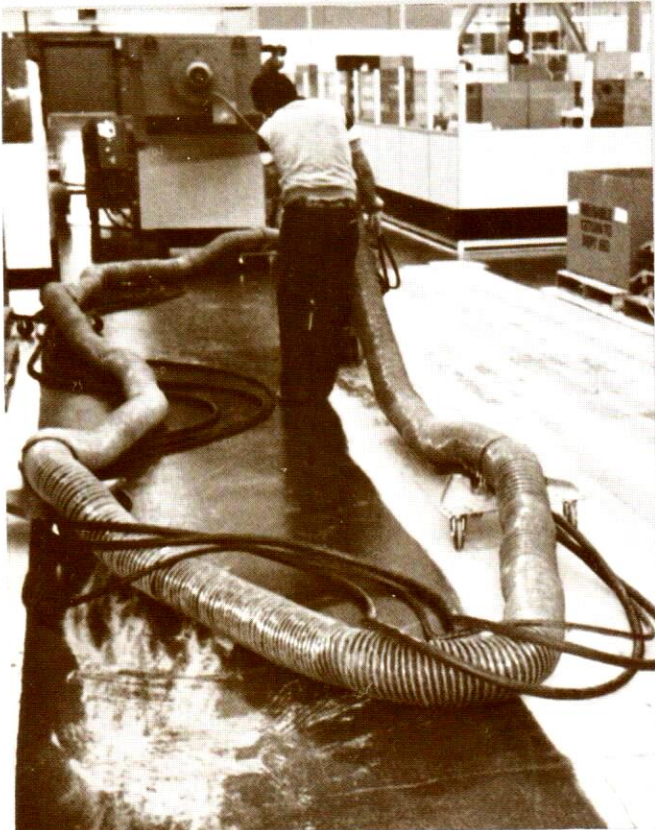
The research and development for Tera-Gem comes from a company that has dedicated over 26 years to this highly technical market. As a result of setting the highest standards in our research, Tera-Gem III has been approved and meets the U.S.D.A., F.D.A., and O.S.H.A. requirements for sanitation, toxicity, and performance.

You can be sure the product and its installation will be to your satisfaction. We have built our reputation on it.

Many areas where Tera-Gem III is at work today are: factories, warehouses, chemical plants, refineries, dairies, breweries, hospitals, jails, canneries and electrical plants.

EXPOSED RE-BAR
TO BE REPAIRED

TERA-GEM III
INDUSTRIAL EPOXY MORTAR
USED FOR REPAIR



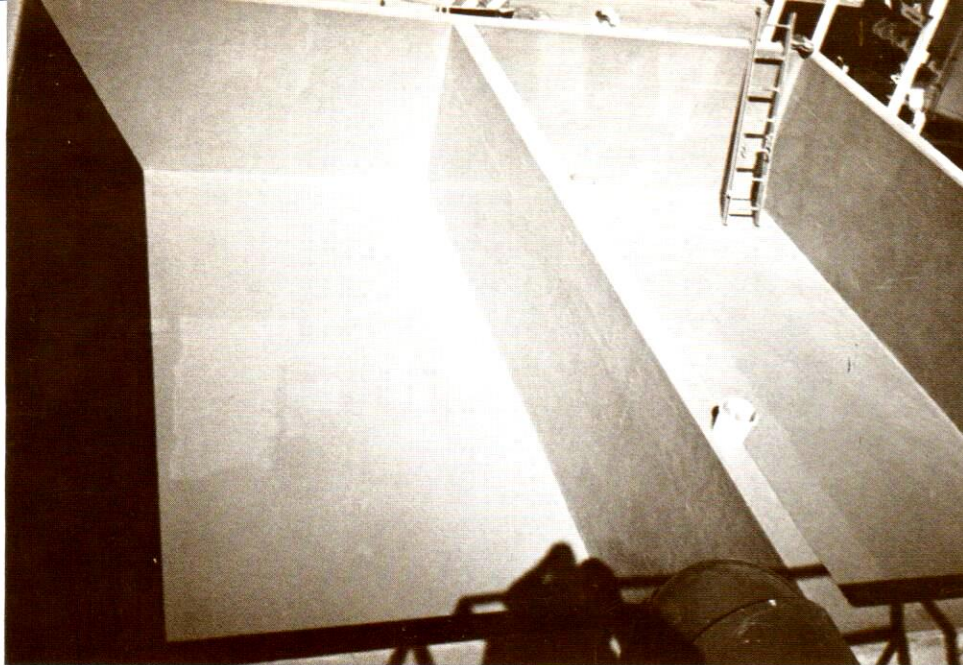
Our main products are Tera-Gem III Industrial Flooring, Tera-Gem III Hi-Chem, and Tera-Gem III Architectural Color Quartz. Each product is developed for a special need, and is available to solve your particular problem.

TERA-GEM III INDUSTRIAL FLOORING

A **tough, good-looking surface** that is suited for mild corrosive spillage and contact. The colors that have been the most popular are gray and red tile.

The **100% solid epoxy system** is mixed with a select, graded aggregate. It is wear-resistant, semi-flexible, handles high-impact use, and is chemically resistant.

We find Tera-Gem III to be useful for preserving or refurbishing concrete cracks, expansion joints, control joints, spalled concrete, and to overlay concrete as well as many other uses not listed.



TERA-GEM III HI-CHEM

This is a **chemical-resistant**, 100% solid epoxy that will repel most highly-corrosive elements, such as chemicals, solvents, fats, and fruit acids.

We **have installed** Tera-Gem III in containment vaults, trenches, sewage treatment tanks, plating shops,

electronic plants, laboratories . . . places where a high-impact, tough-wearing, chemically resistant surface is needed.

The 100% epoxy is mixed with a specially-selected aggregate that is graded to provide the desired end results and is offered in a choice of gray, and tile red.

Tera-Gem III Hi-Chem and Industrial Flooring are a natural combination in many facilities.

WALL, STUD WALL
OR CONCRETE

TERA-GEM III
SEAMLESS EPOXY
FLOOR AND
INTEGRAL BASE

BASE CONCRETE
FLOOR

TERA-GEM III ARCHITECTURAL

Tera-Gem III Architectural is designed to meet a number of installation needs, from large areas to kitchens, bathrooms, halls and high traffic areas. It **meets the demand** for pleasing work environments, mild corrosive use, and a

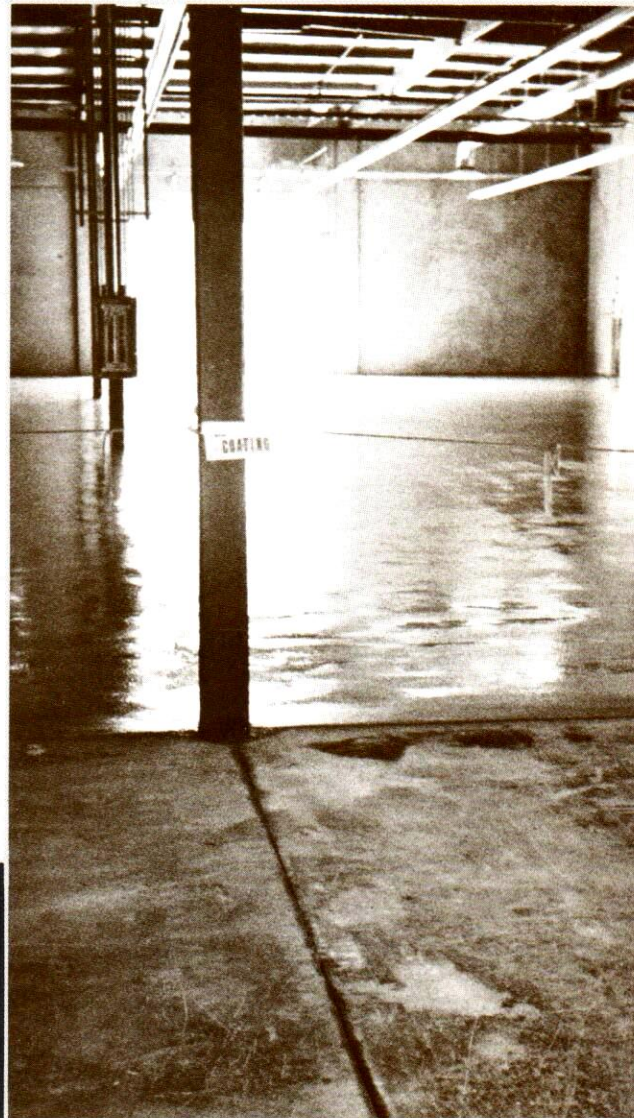
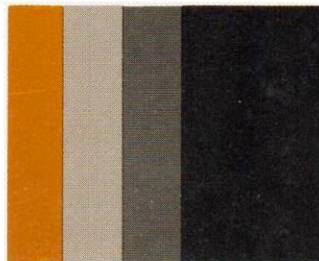
variety of other wear-resistant needs.

Architectural is a trowel applied product, with a **large range** of aesthetically pleasing colors.

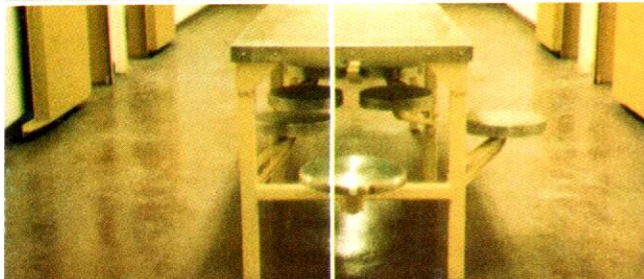
You can count on a totally harmonious appearance, with tough wear-resistant qualities obtained only through the Tera-Gem III Architectural Color Quartz System.

TERA-GEM III SYSTEMS BY REVOLAN

There are some product specifications to be found on the back page. However, should you need more detailed information we will be pleased to help in any way possible. Please phone or write to: **Revolan**, 1631 South 10th Street, San Jose, California 95112, Phone: (408) 288-8658

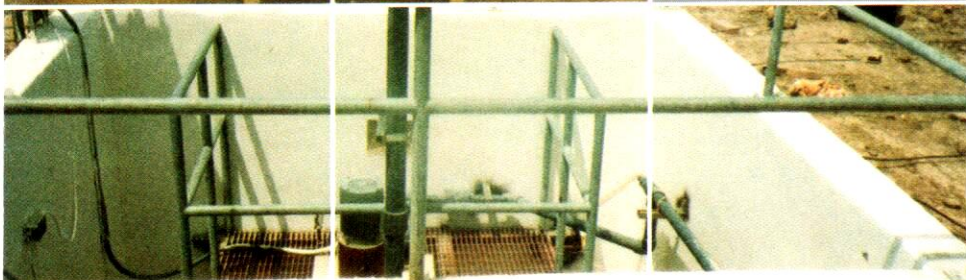


TERA-GEM III EPOXY SYSTEM



TERA-GEM III INDUSTRIAL FLOORING

Compressive Strength	ASTM C-109	8,500 psi
Flexural Strength	ASTM C-293	3,750 psi
Hardness Shore D	ASTM D-2240	80
Bond Strength To Concrete	ACI-403	335 psi,
Impact Resistance	MIL D-3134F	No cracking



TERA-GEM III HI-CHEM

Compressive Strength	ASTM C-109	7,500 psi
Flexural Strength	ASTM C-293	1,285 psi
Hardness Shore D	ASTM D-2240	80
Bond Strength To Concrete	ACI-403	335 psi,
Impact Resistance	MIL D-3134F	No cracking

TERA-GEM III ARCHITECTURAL COLOR QUARTZ

Compressive Strength	ASTM C-109	8,500 psi
Flexural Strength	ASTM C-293	3,750 psi
Hardness Shore D	ASTM D-2240	80
Bond Strength To Concrete	ACI-403	335 psi,
Impact Resistance	MIL D-3134F	No cracking



A LIST OF HIGHLY RESPECTED CLIENTS THAT KNOW, USE, AND TRUST TERA-GEM PRODUCTS.

Motorola Inc.—
Phoenix &
Mesa, Arizona
Austin, Texas
Hato Rey,
Puerto Rico
Paris, France
Seoul, Korea

H.J. Heinz
Weibel Winery
Almaden Winery
Peter Paul Candy

J.M. Smucker Co.
Del Monte Foods
McClellan AFB,
Sacramento
Long Beach Naval
Shipyard
Advanced Circuit
Technology—

San Jose, Ca.
& Tempe, Az.
IBM

Memorex
Hewlett-Packard
Fairchild
National
Semiconductor
Ford Motor Co.
Caterpillar Tractor
Stanford Medical
Center
Stanford Research
Institute

Ames Research NASA
Kelly AFB—
San Antonio
Vandenberg AFB
Mare Island Naval
Shipyard
Lockheed Space &
Aeronautics,
Sunnyvale,
California

REVOLAN

1631 South 10th Street
San Jose, California 95112
(408) 288-8658

